

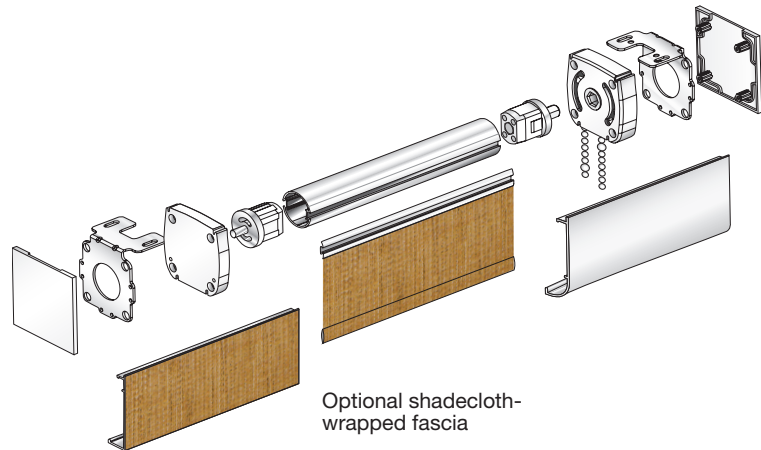
# UrbanShade® System

## Compact, versatile design

The new UrbanShade System is a competitively priced, high-design window covering.

- Easily reconfigured in the field for special site conditions.
- Suitable for residences, home theaters, commercial spaces, and A/V and conference areas.
- High-quality and durable components.
- Ideal when aesthetics, flexibility, and competitive pricing are desirable.

**UrbanShades are available as a Standard assembly or a Prefabricated Cassette.**



### Models

- Manual—smooth operation with a continuous bead chain
- Motorized—battery-powered with RTS wireless remote control
- Motorized—low voltage with wireless RTS + dry-contact control

### Economical

- Cost effective—competitively priced

### Reliability

- Sturdy—heavy-duty steel support brackets with ultra-durable composite housing
- Powerful—allows for shades up to 10 ft. (305cm) high
- Reliable—ten-year non-depreciating warranty

### Design attributes

- Versatile—integrated, interchangeable components
- Flexible—universal mounting brackets for easy on-site reconfiguration
- Compact—small edge clearance to reduce light leaks
- Sleek—refined, unobtrusive profile

### Easy installation

- Innovative—universal mounting brackets (wall, ceiling, or jamb)
- Adaptable—interchangeable left- and right-drive brackets
- Efficient—optional prefabricated cassette for fast installation
- Manageable—SnapLoc® mini-spline enables easy shadecloth removal and maintenance

### Controls

- Simple—manual hand-operated continuous bead chain
- Interoperative—optional wireless RF/RTS or hard-wired low-voltage control
- Direct—optional dry-contact daisy-chained switch control

### Options

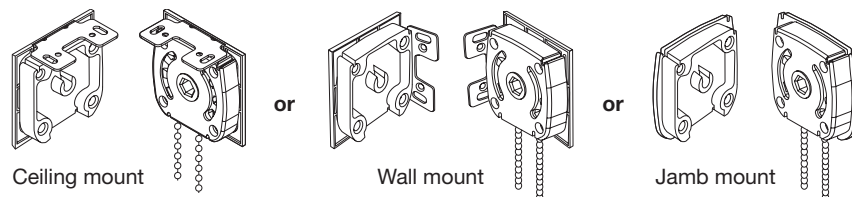
- Decorative—SnapLoc fascia as square or radius, continuous or captured, and baked-enamel finish or shadecloth-wrapped
- Room darkening—side and sill channels
- Functional—Lift-Assist Mechanism (LAM) for heavy manual shades

# Manual UrbanShade System

## Standard shade prices include:

One pair of universal UrbanShade brackets, chain, chain retainer, shadecloth with shadecloth-covered hem bar, SnapLoc spline, and a 1.25 in. (3.18cm) or 1.375 in. (3.5cm) SnapLoc tube. Shadecloths that are railroaded are turned width for height.

## Universal mounting



## Standard components

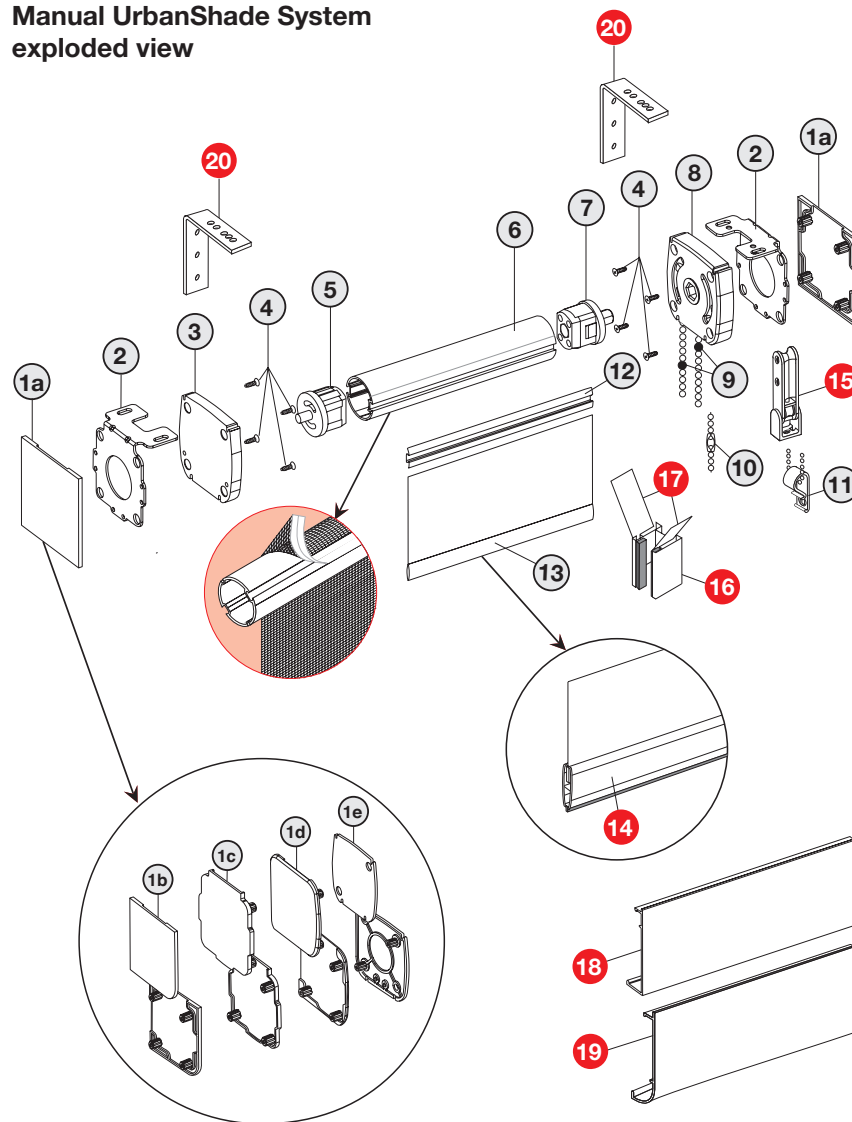
End Plate options:

- 1a Square Fascia Captured End Plate
- 1b Round Fascia Captured End Plate
- 1c Universal Continuous Backplate (square or round fascia)
- 1d No-Fascia Backplate
- 1e Universal Jamb-Mount Continuous End Plate (Square or Round Fascia)
- 2 Concealed Steel Mounting Plate
- 3 Idle-End Housing
- 4 Screws
- 5 Idle-End Tube Plug or LAM, if required (not shown)
- 6 SnapLoc Tube
- 7 Drive-End Tube Plug
- 8 Drive-End Housing for manual shades
- 9 Upper and Lower Bead Chain Stops for manual shades
- 10 Bead Chain Connector for manual MechoShades®
- 11 Chain retainer for MechoShades®
- 12 SnapLoc Mini-Spline
- 13 Standard Light-Seal Hem Bar

## Optional accessories

- 14 Exposed Hem Bar with Light Seal
- 15 Spring-Loaded Tension Pulley Chain Retainer for manual shades
- 16 Room-Darkening Side Channel (single)
- 17 Room-Darkening Shadecloth Guides (pair)
- 18 SnapLoc Regular-Roll Fascia—square
- 19 SnapLoc Regular-Roll Fascia—radius
- 20 Wall-Mount Extension Bracket

## Manual UrbanShade System exploded view

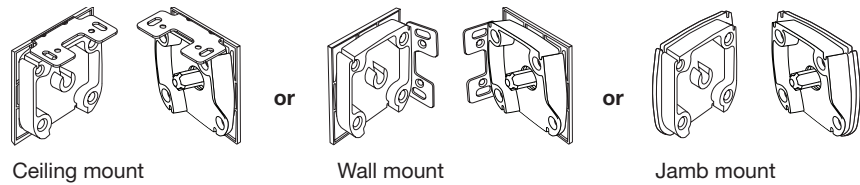


# Motorized UrbanShade System

## Standard shade prices include:

One pair of universal UrbanShade brackets, shade cloth with shade cloth-covered hem bar, battery-powered motor, battery pack, SnapLoc spline, and a 1.375 in. (3.5cm) SnapLoc tube. Railroaded shade cloths are turned width for height.

## Universal mounting



## Standard components

End Plate options:

- 1a Square Fascia Captured End Plate
- 1b Round Fascia Captured End Plate
- 1c Universal Continuous Backplate—square or round fascia
- 1d No-Fascia Backplate
- 1e Universal Jamb-Mount Continuous End Plate—square or round fascia
- 2 Concealed Steel Mounting Plate
- 3 Idle-End Housing
- 4 Screws
- 5 Idle-End Tube Plug
- 6 SnapLoc Tube
- 7 SnapLoc Mini-Spline
- 8 Hem Bar—standard shade cloth-covered

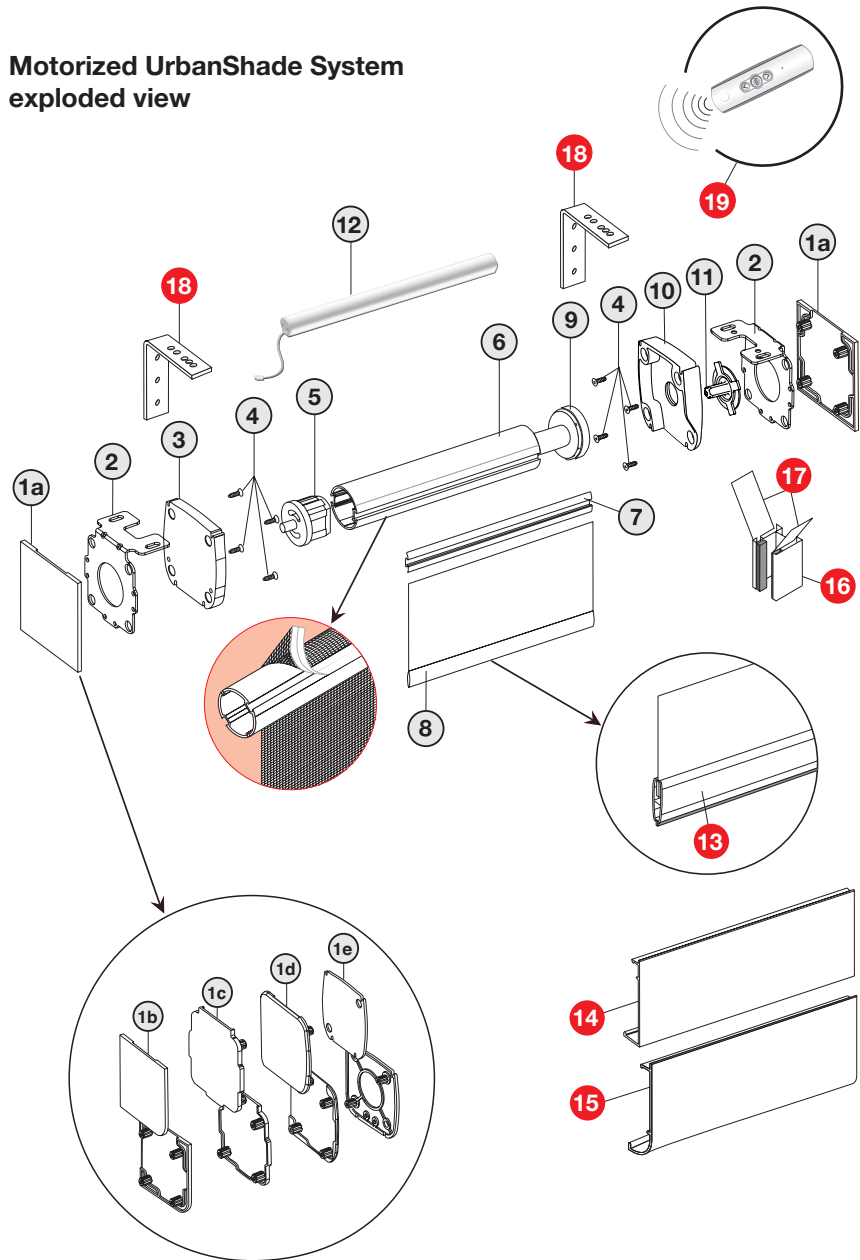
## Standard motorized components

- 9 24V Motor
- 10 Drive-End Housing for motorized ElectroShades®
- 11 Motor Spindle
- 12 Battery Pack

## Optional accessories

- 13 Exposed Hem Bar with Light Seal
- 14 SnapLoc Regular-Roll Fascia—square
- 15 SnapLoc Regular-Roll Fascia—radius
- 16 Room-Darkening Side Channel—single
- 17 Room-Darkening shade cloth Guides—pair
- 18 Wall-Mount Extension Bracket
- 19 RTS Wireless Remote

## Motorized UrbanShade System exploded view



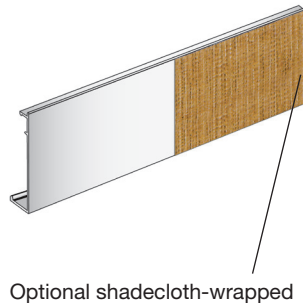
## UrbanShade System fascia and specifications

### Fascia colors:

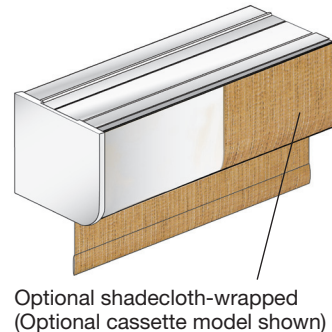
- White (WH).
- Colonial White (CW).
- Alabaster (AL).
- Clear Anodized (CA).
- Grey (GR).
- Quaker Bronze (QB).
- Black (BK).

(Shadecloth-wrapped fascia will match shadecloth color, however shadecloth-wrapped end caps are not available)

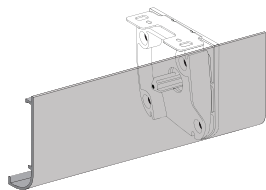
### Square fascia



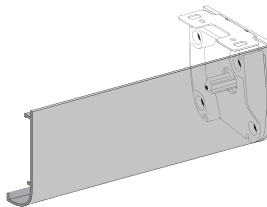
### Radius fascia



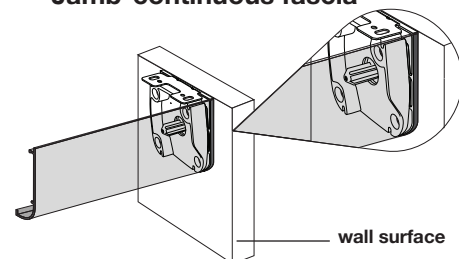
### Continuous fascia



### Captured fascia



### Jamb-continuous fascia



### Specifications

Dimensions: mounting brackets	• 2.75 in. (7cm) deep x 2.75 in. (7cm) high	
Mounting	• Wall, ceiling, or jamb mount; reconfigurable on-site; truly universal	
Bracket description	• Heavy-duty, zinc-plated, steel-encased in a high-impact, decorative matte-finish composite housing	
Roll-up diameter (RUD)	• 2.48 in. (63mm) allows shades of up to 10 ft. (305cm) or higher	
Edge Clearances	Manual: • Drive end 0.875 in. (22.2mm) • Idle end 0.688 in. (17.5mm)	Motorized: • Drive end 0.75 in. (19mm) • Idle end 0.688 in. (17.5mm)
Hardware options	• Continuous or captured end caps • Lift-Assist Mechanism (LAM) • Room-Darkening Side and Sill Channels	• Standard Shadecloth-Covered Hem Bar • Optional Universal Exposed Hem Bar
Bracket color options	• White, Grey, or Black	
Fascia profiles	• Square or radius, continuous or captured end plates, baked-enamel finish or shadecloth-wrapped	
Fascia color options	• White (WH), Clear Anodized (CA), Grey (GR), Quaker Bronze (QB), Black (BK), Colonial White (CW), Alabaster (AL)	
Lift capacity (manual shade)	• 11 lbs. (5kg) of shadecloth with Lift-Assist Mechanism (LAM)	
Maximum width, single band	• 96 in. (244cm) wide	
Motorization options	• Battery-powered motor, wireless RTS, lifting capacity is approx. 11 lbs. (5kg) • WhisperShade® low voltage, 2Nm tubular motor, wireless WhisperShade RTS, DCT, and RS-485 lifting capacity approx. 18 lbs. (8.16kg) on 1.56 in. (3.96cm) tube	
Convertible option	• Transforms the manual MechoShade with existing shadecloth and tube and by adding motor and switching, provided 1.56 in. (3.96cm) tube supplied	
DoubleShade® bracket	• Allows for two shade bands—manual or motorized systems—to be used in a low-profile and compact support bracket	
Warranty	• Ten-year non-depreciating warranty on all hardware and shadecloth • Five-year warranty on motors	